

Summary of Mineral Block
Part A- GENERAL INFORMATION ABOUT MINERAL BLOCK

| Sl. No. | Features | Details |
|-----------|---|---|
| 1. | Location | |
| | Mineral Block | A-15 Reddipalayam (Sub Block A, B & C) Limestone Block |
| | Corner Points (Latitude Longitude) | See Appendix 1 |
| | Villages | Reddipalayam |
| | Tehsil/Taluka | Ariyalur |
| | District | Ariyalur |
| | State | Tamil Nadu |
| 2. | Area (Hectares/ Square Kilometres) | 69.13 Ha |
| | Mineralised Area | 69.13 Ha |
| | Non-Mineralised Area | Nil |
| 3. | Exploration | |
| | Status | G2 |
| | Exploration Agency | M/s KIOCL Limited |
| | Total Number of Boreholes with meterage | 12 Boreholes 832.10 m |
| | Borehole Spacing (Density) | 400 m |
| 4 | Quantity of Minerals (Grade-wise) | |
| | Cement Grade Limestone (> 44% CaO) | Indicated Mineral Resources (G-2)- Sub Block A- 28,723,426.63 MT (CaO%- 49.28, MgO%- 0.75, SiO2%- 4.24) Sub Block B- 10,962,070.26 (CaO%- 49.17, MgO%- 0.73, SiO2%- 4.4) Sub Block C- 2,042,304.70 (CaO%- 49.37, MgO%- 0.73, SiO2%- 4.60) |
| | Total Resources | 41727801.59 MT (CaO%- 49.26, MgO%- 0.74, SiO2%- 4.38) |
| 5 | Mineralised Zones | |
| | Number of mineral zones | Twelve (12) |
| | Trend (Dip and Strike) | Strike- N-S to NNE-SSW Average Dip- 7.5° due east |
| | Total Thickness | Average Thickness- 34.28 m |
| 6 | Accessibility | |
| | Nearest Rail Head | Ariyalur, 15 Km |
| | Road | Block is situated adjacent to National Highway 81 and State Highway 139 |
| | Airport | 90 Km from Tiruchirappalli |
| 7 | Hydrography | |
| | Local Surface Drainage Pattern (Channels) | - |
| | Rivers/Streams | No perennial river/streams, seasonal stream flows through the block |
| 8 | Climate | |
| | Mean Annual Rainfall | Approximately 736.70 mm/annum |

| | | |
|----------|--|-------------------|
| | Temperatures (December) Temperatures (June) | >24.9° C 39°C |
| 9 | Topography | |
| | Toposheet No. | 58 M/04 |
| | Morphology of the Area | Gently Undulating |

PART B – PARTICULARS OF STATUTORY LICENSES, PERMITS, PERMISSIONS, CONCESSIONS, APPROVALS AND CONSENTS RELATED TO MINING OPERATIONS

| <i>Sl. No.</i> | <i>Particulars</i> | <i>Details/ Status</i> |
|----------------|--|---|
| 1 | Forest clearance | As Applicable |
| 2 | Wild life clearance (sanctuary, reserve or special zone clearances) | As Applicable |
| 3 | Mining Plan Approval | To be obtained by the Preferred / Successful Bidder |
| 4 | Environmental clearance | To be obtained by the Preferred / Successful Bidder |
| 5 | Consent to establish | To be obtained by the Preferred / Successful Bidder |
| 6 | Explosive license | To be obtained by the Preferred / Successful Bidder |
| 7 | Permission for mine opening | To be obtained by the Preferred / Successful Bidder |
| 8 | Permission of installation/ trial operation of equipment | To be obtained by the Preferred / Successful Bidder |
| 9 | Ground water clearance (Centre/State) | To be obtained by the Preferred / Successful Bidder |
| 10 | Railway siding approval | To be obtained by the Preferred / Successful Bidder |
| 11 | Approval for diesel storage | To be obtained by the Preferred / Successful Bidder |
| 12 | Power line from State Discom | To be obtained by the Preferred / Successful Bidder |
| 13 | Clearances relating to work under an existing transmission line or shifting of the transmission line | To be obtained by the Preferred / Successful Bidder |
| 14 | Grama Sabha consent | To be obtained by the Preferred / Successful Bidder |
| 15 | Any other clearances to start mining operation | To be obtained by the Preferred / Successful Bidder |

PART C – PARTICULARS OF LAND

| Sl. No. | Details | Block A | Block B | Block C | Total |
|---------|--|------------------------------------|---------|---------|--------|
| 1. | Total Concession Area (Ha) | 46.755 | 17.925 | 4.450 | 69.130 |
| 2. | Forest Land with Status | Nil | Nil | Nil | Nil |
| 3. | Land owned by the State Government | 5.645 | 0.290 | 0.095 | 6.030 |
| 4. | Land not owned by the State Government | 41.110 | 17.635 | 4.355 | 63.100 |
| 5. | Revenue survey details of the area | As per the Attached Cadastral Plan | | | |

Appendix 1: Block Boundary Corner Points

WGS 84 spheroid and datum

Boundary Point A15 Reddipalayam Sub-Block (A)

| BP NO. | Easting | Northing |
|--------|-----------|------------|
| 1 | 300030.89 | 1227174.28 |
| 2 | 300099.51 | 1227165.43 |
| 3 | 300120.99 | 1227162.24 |
| 4 | 300136.42 | 1227160.64 |
| 5 | 300150.70 | 1227158.89 |
| 6 | 300257.54 | 1227147.55 |
| 7 | 300257.81 | 1227126.50 |
| 8 | 300256.93 | 1227105.30 |
| 9 | 300256.30 | 1227044.30 |
| 10 | 300256.57 | 1227023.25 |
| 10A | 300238.07 | 1227020.63 |
| 10B | 300237.48 | 1227008.86 |
| 10C | 300217.66 | 1226854.52 |
| 10D | 299983.43 | 1226753.75 |
| 10E | 299940.64 | 1226676.12 |
| 10F | 299846.94 | 1226596.51 |
| 10G | 299693.92 | 1226523.81 |
| 10H | 299690.65 | 1226412.71 |
| 10I | 299438.09 | 1226406.63 |
| 10J | 299419.13 | 1226523.18 |
| 10K | 299297 | 1226589.91 |
| 10L | 299375.05 | 1226750.09 |
| 10M | 299474.62 | 1226727.05 |
| 10N | 299513.08 | 1226876.68 |
| 74 | 299317.69 | 1226896.26 |
| 75 | 299345.59 | 1227001.84 |
| 76 | 299457.17 | 1227075.16 |
| 77 | 299486.82 | 1227113.57 |
| 78 | 299540.45 | 1227183.59 |
| 79 | 299617.30 | 1227171.71 |
| 80 | 299750.07 | 1227152.75 |
| 81 | 299817.90 | 1227133.02 |
| 82 | 299840.21 | 1227131.34 |
| 83 | 299856.20 | 1227130.13 |
| 84 | 299892.06 | 1227128.17 |
| 85 | 299910.49 | 1227126.36 |
| 86 | 299945.64 | 1227124.45 |

| BP NO. | Easting | Northing |
|---------------|----------------|-----------------|
| 87 | 299953.63 | 1227124.01 |
| 88 | 299967.16 | 1227122.47 |
| 89 | 299996.01 | 1227122.50 |
| 90 | 300028.80 | 1227121.51 |
| 91 | 300029.28 | 1227133.50 |

Boundary Point A15 Reddipalayam Sub-Block (B)

| BP NO. | Easting | Northing |
|---------------|----------------|-----------------|
| 29 | 300351.71 | 1226181.48 |
| 30 | 300358.17 | 1226136.49 |
| 31 | 300356.17 | 1226117.20 |
| 32 | 300309.13 | 1226113.49 |
| 33 | 300204.37 | 1226059.39 |
| 34 | 300174.94 | 1226027.11 |
| 35 | 300170.29 | 1226101.20 |
| 36 | 300102.75 | 1226107.83 |
| 37 | 300098.75 | 1226108.42 |
| 38 | 300067.49 | 1226112.18 |
| 39 | 300036.45 | 1226114.60 |
| 40 | 300037.03 | 1226068.37 |
| 41 | 300000.73 | 1226073.04 |
| 42 | 299986.67 | 1226074.65 |
| 43 | 299967.28 | 1226076.89 |
| 44 | 299945.28 | 1226079.18 |
| 45 | 299915.90 | 1226081.95 |
| 46 | 299893.95 | 1226088.42 |
| 47 | 299835.02 | 1226088.85 |
| 48 | 299764.70 | 1226040.59 |
| 49 | 299756.99 | 1225958.93 |
| 50 | 299718.29 | 1225954.87 |
| 51 | 299716.56 | 1226030.92 |
| 52 | 299637.02 | 1226041.28 |
| 53 | 299661.62 | 1226149.87 |
| 54 | 299674.01 | 1226148.09 |
| 55 | 299686.81 | 1226230.37 |
| 55A | 299683.34 | 1226249.64 |
| 55B | 299688.9 | 1226287.69 |
| 55C | 299712.28 | 1226302.86 |
| 55D | 299793.97 | 1226325.73 |
| 55E | 299901.21 | 1226408 |
| 55F | 299891.48 | 1226473.81 |
| 55G | 300040.18 | 1226474.91 |
| 55H | 300051.35 | 1226286.92 |
| 55I | 300097.48 | 1226268.88 |

| BP NO. | Easting | Northing |
|---------------|----------------|-----------------|
| 55J | 300192.32 | 1226248.94 |
| 55K | 300325.71 | 1226249.44 |
| 55L | 300341.04 | 1226251.62 |

Boundary Point A15 Reddipalayam Sub-Block (C)

| BP No. | Easting | Northing |
|---------------|----------------|-----------------|
| 19 | 300473.820 | 1226608.390 |
| 20 | 300460.330 | 1226549.950 |
| 20A | 300425.175 | 1226465.478 |
| 20B | 300335.949 | 1226463.378 |
| 20C | 300335.380 | 1226461.876 |
| 20D | 300327.301 | 1226392.593 |
| 20E | 300175.461 | 1226403.108 |
| 20F | 300199.786 | 1226477.058 |
| 20G | 300279.450 | 1226470.839 |
| 20H | 300353.962 | 1226632.715 |
| 20I | 300378.895 | 1226625.468 |
| 20J | 300381.408 | 1226629.815 |
| 20K | 300441.424 | 1226635.348 |

**LAND SCHEDULE MAP OF A-15 REDDIPALAYAM LIMESTONE BLOCK
TAHSIL – ARIYALUR, DIST. – ARIYALUR, (TN),**

PART PLAN OF REDDIPALAYAM VILLAGE, ARIYALUR TALUK & DISTRICT

BLOCK-A15- AUCTION BLOCK

A15- Block A
Boundary Coordinates

| BP. NO | Latitude | Longitude |
|--------|----------------|------------------|
| 1 | N11° 5' 44.46" | E 79° 10' 9.16" |
| 2 | N11° 5' 44.18" | E 79° 10' 11.43" |
| 3 | N11° 5' 44.03" | E 79° 10' 12.13" |
| 4 | N11° 5' 44.03" | E 79° 10' 12.61" |
| 5 | N11° 5' 43.98" | E 79° 10' 13.11" |
| 6 | N11° 5' 42.93" | E 79° 10' 16.64" |
| 7 | N11° 5' 42.36" | E 79° 10' 16.62" |
| 8 | N11° 5' 42.36" | E 79° 10' 16.62" |
| 9 | N11° 5' 41.27" | E 79° 10' 16.62" |
| 10 | N11° 5' 39.59" | E 79° 10' 16.62" |
| 11 | N11° 5' 34.59" | E 79° 10' 15.99" |
| 12 | N11° 5' 30.78" | E 79° 10' 8.17" |
| 13 | N11° 5' 27.98" | E 79° 9' 6.68" |
| 14 | N11° 5' 25.51" | E 79° 10' 3.58" |
| 15 | N11° 5' 22.88" | E 79° 9' 58.62" |
| 16 | N11° 5' 19.20" | E 79° 9' 58.38" |
| 17 | N11° 5' 18.94" | E 79° 9' 50.02" |
| 18 | N11° 5' 22.71" | E 79° 9' 49.43" |
| 19 | N11° 5' 24.95" | E 79° 9' 45.49" |
| 20 | N11° 5' 30.22" | E 79° 9' 47.94" |
| 21 | N11° 5' 29.51" | E 79° 9' 51.21" |
| 22 | N11° 5' 34.35" | E 79° 9' 52.58" |
| 23 | N11° 5' 35.27" | E 79° 9' 45.72" |
| 24 | N11° 5' 38.71" | E 79° 9' 46.62" |
| 25 | N11° 5' 41.12" | E 79° 9' 50.28" |
| 26 | N11° 5' 42.37" | E 79° 9' 51.25" |
| 27 | N11° 5' 44.66" | E 79° 9' 53.00" |
| 28 | N11° 5' 44.29" | E 79° 9' 55.54" |
| 29 | N11° 5' 43.70" | E 79° 9' 59.92" |
| 30 | N11° 5' 43.07" | E 79° 10' 2.15" |
| 31 | N11° 5' 43.02" | E 79° 10' 2.89" |
| 32 | N11° 5' 42.99" | E 79° 10' 3.42" |
| 33 | N11° 5' 42.93" | E 79° 10' 4.60" |
| 34 | N11° 5' 42.87" | E 79° 10' 5.21" |
| 35 | N11° 5' 42.82" | E 79° 10' 6.36" |
| 36 | N11° 5' 42.81" | E 79° 10' 6.63" |
| 37 | N11° 5' 42.76" | E 79° 10' 7.07" |
| 38 | N11° 5' 42.77" | E 79° 10' 8.02" |
| 39 | N11° 5' 42.74" | E 79° 10' 9.10" |
| 40 | N11° 5' 43.13" | E 79° 10' 9.12" |

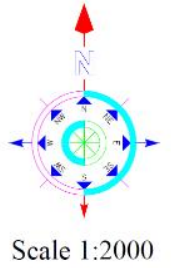
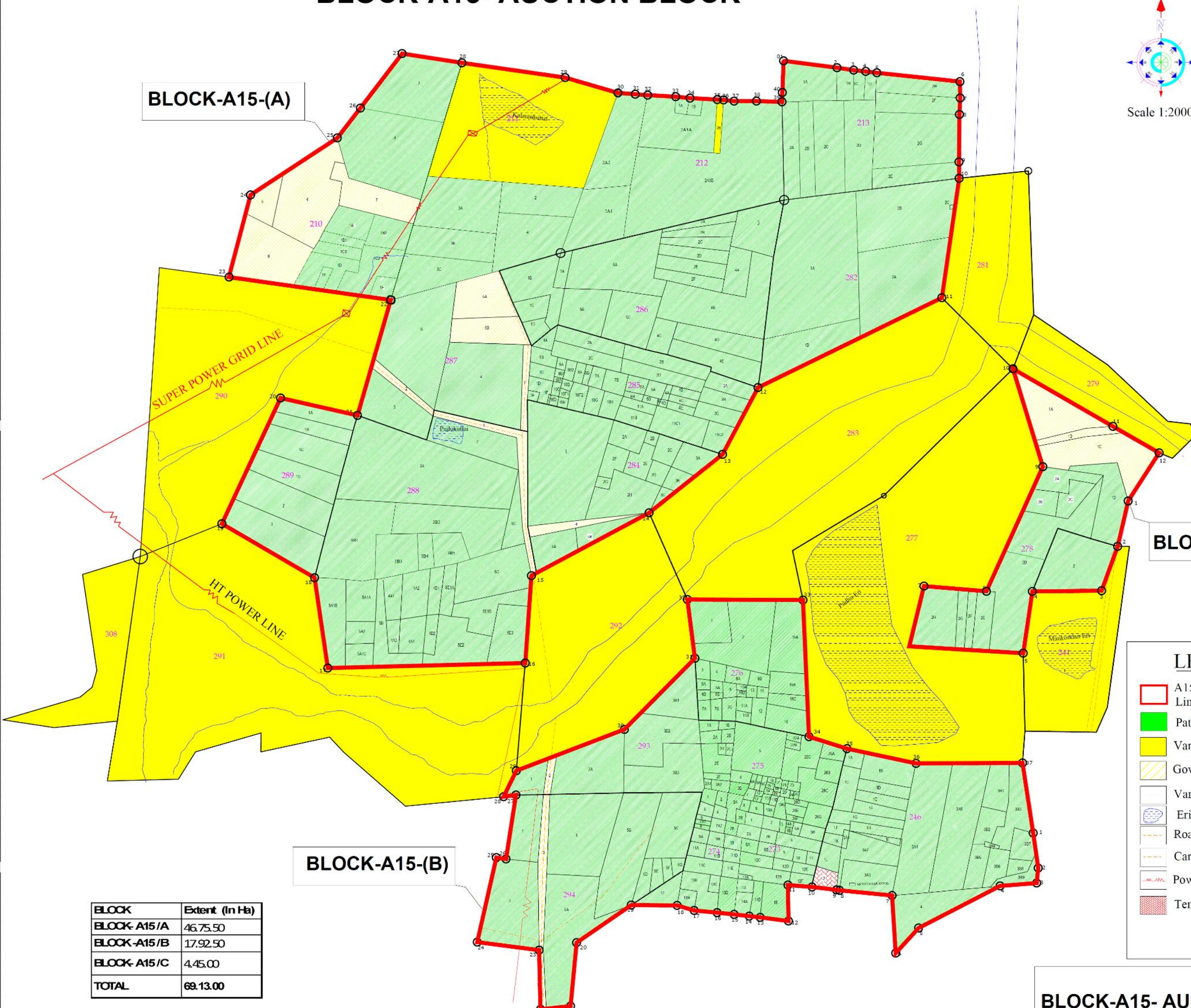
A15- Block B

| BP. NO | Latitude | Longitude |
|--------|-----------------|-------------------|
| 1 | N11° 5' 12.21" | E 79° 10' 19.93" |
| 2 | N11° 5' 10.75" | E 79° 10' 20.16" |
| 3 | N11° 5' 10.12" | E 79° 10' 20.09" |
| 4 | N11° 5' 9.98" | E 79° 10' 18.54" |
| 5 | N11° 5' 8.216" | E 79° 10' 15.10" |
| 6 | N11° 5' 7.160" | E 79° 10' 14.14" |
| 7 | N11° 5' 9.570" | E 79° 10' 13.97" |
| 8 | N11° 5' 9.772" | E 79° 10' 11.75" |
| 9 | N11° 5' 9.791" | E 79° 10' 11.61" |
| 10 | N11° 5' 9.597" | E 79° 10' 10.58" |
| 11 | N11° 5' 9.959" | E 79° 10' 9.663" |
| 12 | N11° 5' 8.475" | E 79° 10' 9.597" |
| 13 | N11° 5' 8.650" | E 79° 10' 8.397" |
| 14 | N11° 5' 8.669" | E 79° 10' 7.957" |
| 15 | N11° 5' 8.788" | E 79° 10' 7.297" |
| 16 | N11° 5' 8.809" | E 79° 10' 6.567" |
| 17 | N11° 5' 8.888" | E 79° 10' 5.607" |
| 18 | N11° 5' 9.039" | E 79° 10' 4.887" |
| 19 | N11° 5' 9.101" | E 79° 10' 2.957" |
| 20 | N11° 5' 7.517" | E 79° 10' 0.627" |
| 21 | N11° 5' 4.888" | E 79° 10' 0.397" |
| 22 | N11° 5' 4.718" | E 79° 9' 59.117" |
| 23 | N11° 5' 7.152" | E 79° 9' 59.047" |
| 24 | N11° 5' 7.514" | E 79° 9' 56.427" |
| 25 | N11° 5' 11.057" | E 79° 9' 57.207" |
| 26 | N11° 5' 10.997" | E 79° 9' 57.617" |
| 27 | N11° 5' 13.677" | E 79° 9' 58.027" |
| 28 | N11° 5' 13.607" | E 79° 9' 57.497" |
| 29 | N11° 5' 14.697" | E 79° 9' 58.037" |
| 30 | N11° 5' 16.467" | E 79° 10' 2.997" |
| 31 | N11° 5' 19.447" | E 79° 10' 5.567" |
| 32 | N11° 5' 21.897" | E 79° 10' 5.237" |
| 33 | N11° 5' 21.907" | E 79° 10' 10.127" |
| 34 | N11° 5' 16.197" | E 79° 10' 10.417" |
| 35 | N11° 5' 15.707" | E 79° 10' 12.027" |
| 36 | N11° 5' 15.107" | E 79° 10' 14.957" |
| 37 | N11° 5' 15.147" | E 79° 10' 19.467" |

A15- Block C

| BP. NO | Latitude | Longitude |
|--------|----------------|------------------|
| 1 | N11° 5' 26.13" | E 79° 10' 23.87" |
| 2 | N11° 5' 24.23" | E 79° 10' 23.44" |
| 3 | N11° 5' 22.37" | E 79° 10' 22.77" |
| 4 | N11° 5' 22.32" | E 79° 10' 19.81" |
| 5 | N11° 5' 19.74" | E 79° 10' 19.47" |
| 6 | N11° 5' 20.00" | E 79° 10' 14.64" |
| 7 | N11° 5' 22.52" | E 79° 10' 15.25" |
| 8 | N11° 5' 22.32" | E 79° 10' 17.89" |
| 9 | N11° 5' 27.54" | E 79° 10' 21.25" |
| 10 | N11° 5' 31.63" | E 79° 10' 18.96" |
| 11 | N11° 5' 29.25" | E 79° 10' 23.21" |
| 12 | N11° 5' 28.15" | E 79° 10' 25.17" |

| BLOCK | Extent (In Ha) |
|--------------|-----------------|
| BLOCK- A15/A | 46.75.50 |
| BLOCK- A15/B | 17.92.50 |
| BLOCK- A15/C | 4.45.00 |
| TOTAL | 69.13.00 |



LEGEND

- A15 Reddipalayam Limestone Auction Block
- Patta Lands
- Vari Poramboke
- Government Lands
- Vari
- Eri/Kuttai/kulam
- Road
- Cart Road
- Power Line
- Temple Lands

BLOCK-A15- AUCTION BLOCK
SCALE :1:2000